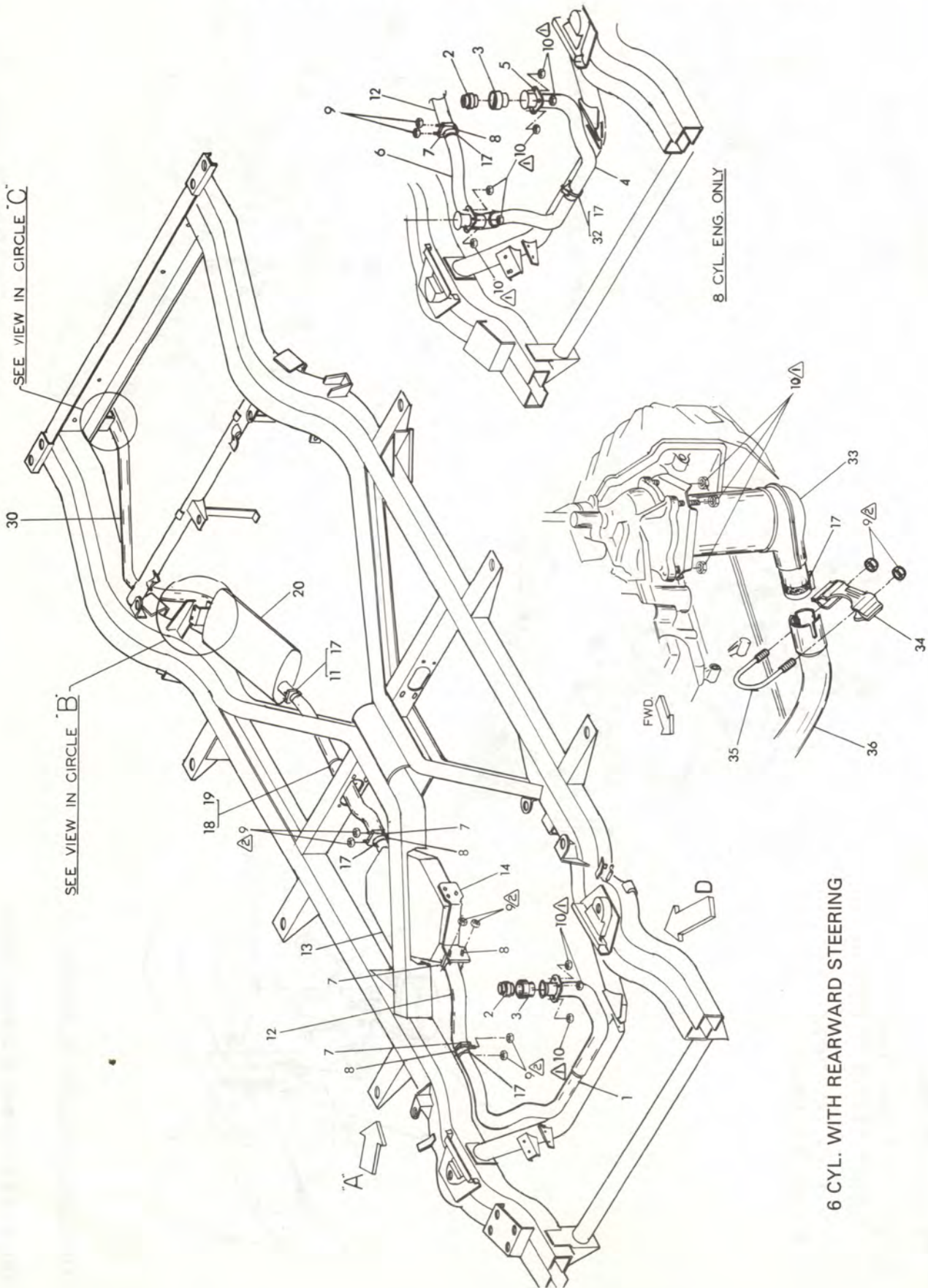


GROUP 15 — EXHAUST SYSTEM

EXHAUST SYSTEM INSTALLATION - 6 AND 8 CYLINDER



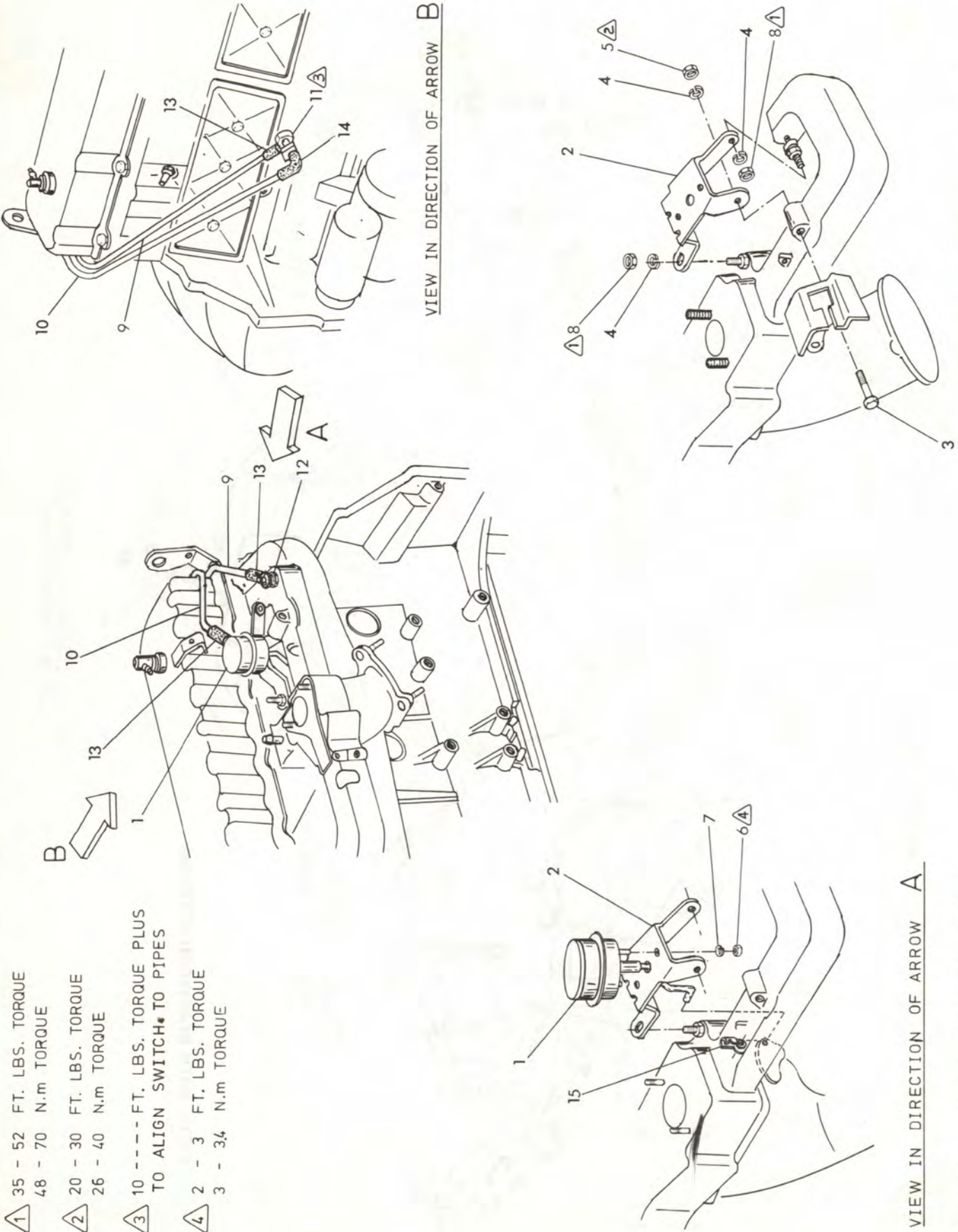
6 CYL. WITH REARWARD STEERING

VIEW IN DIRECTION OF ARROW D
6 CYL. WITH FORWARD STEERING

FIG. 1 — Exhaust System Installation - 6 and 8 Cylinder

GROUP 15 — EXHAUST SYSTEM

EXHAUST HEAT VALVE - E.F.E. - 6 CYLINDER - FEDERAL



- 1 35 - 52 FT. LBS. TORQUE
48 - 70 N.m TORQUE
- 2 20 - 30 FT. LBS. TORQUE
26 - 40 N.m TORQUE
- 3 10 - - - FT. LBS. TORQUE PLUS
TO ALIGN SWITCH* TO PIPES
- 4 2 - 3 FT. LBS. TORQUE
3 - 3,4 N.m TORQUE

VIEW IN DIRECTION OF ARROW A

FIG. 2—E.F.E. System - 6 Cylinder - Federal

VIEW IN DIRECTION OF ARROW B

VIEW IN DIRECTION OF ARROW A