

**CHASSIS  
AND  
BODY  
SERVICE MANUAL  
SUPPLEMENT**

**CHECKER MOTORS CORPORATION**

**KALAMAZOO, MICHIGAN 49007**

**BEGINNING WITH CHASSIS NO. 90000**

## FORWARD

This supplement has been prepared for use with the Checker Motors Corporation Chassis and Body Service Manuals beginning with chassis No. 80000.

The Group Index, this page, lists only the groups that have changes and covers only the changes on Checker vehicles beginning with chassis No. 90000.

Refer to the Checker Motors Corporation Chassis and Body Service Manuals to complete the service coverage on Checker vehicles beginning with chassis No. 90000.

Summaries of new special tools, when required, and specifications for vehicle components are included at the end of each group.

When reference is made in this supplement to a brand name, number or specific tool, an equivalent product may be used in place of the recommended item.

All information, illustrations and specifications contained in this literature are based on the latest product information available at the time of publication approval. The right is reserved to make changes at any time without notice.

### CAUTION

*This vehicle contains some parts dimensioned in the metric system as well as in the customary system. Some fasteners are metric and are very close in dimensions to familiar customary fasteners in the inch system. It is important to note that, during any vehicle maintenance procedures, replacement fasteners must have the same measurements and strength as those removed whether metric or customary. (Numbers on the heads of metric bolts and on surfaces of metric nuts indicate their strength. Customary bolts use radial lines for this purpose, while most customary nuts do not have strength markings.) Mismatched or incorrect fasteners can result in vehicle damage or malfunction, or possible personal injury. Therefore, fasteners removed from the vehicle should be saved for re-use in the same locations whenever possible. Where the fasteners are not satisfactory for re-use, care should be taken to select a replacement that matches the original. For information and assistance, see your Checker dealer.*

**CHECKER MOTORS CORPORATION**  
KALAMAZOO, MICHIGAN 49007

## GROUP INDEX

GROUP NO.	DESCRIPTION
0	GENERAL INFORMATION
5	BRAKES
7	STEERING
9	COOLING AND HEATING
10	ENGINE
12	TRANSMISSION
14	FUEL SYSTEM
15	EXHAUST SYSTEM
16	ELECTRICAL - CHASSIS
30	ELECTRICAL - BODY

GROUP INDEX	GROUP NO.	DESCRIPTION
	1	GENERAL INFORMATION
	2	...
	3	...
	4	...
	5	...
	6	...
	7	...
	8	...
	9	...
	10	...
	11	...
	12	...
	13	...
	14	...
	15	...
	16	...
	17	...
	18	...
	19	...
	20	...
	21	...
	22	...
	23	...
	24	...
	25	...
	26	...
	27	...
	28	...
	29	...
	30	...

### IMPORTANT SAFETY NOTICE

Proper service and repair is important to the safe, reliable operation of all motor vehicles. The service procedures recommended by Checker and described in this service manual are effective methods for performing service operations. Some of these service operations require the use of tools specially designed for the purpose. The special tools should be used when and as recommended.

It is important to note that some warning against the use of specific service methods that can damage the vehicle or render it unsafe are stated in this service manual. It is also important to understand these warnings are not exhaustive. Checker could not possibly know, evaluate and advise the service trade of all conceivable ways in which service might be done or of the possible hazardous consequences of each way. Consequently, Checker has not undertaken any such broad evaluation. Accordingly, anyone who uses a service procedure or tool which is not recommended by Checker must first satisfy himself thoroughly that neither his safety nor vehicle safety will be jeopardized by the service method he selects.

GROUP INDEX	GROUP NO.	DESCRIPTION
	1	GENERAL INFORMATION
	2	...
	3	...
	4	...
	5	...
	6	...
	7	...
	8	...
	9	...
	10	...
	11	...
	12	...
	13	...
	14	...
	15	...
	16	...
	17	...
	18	...
	19	...
	20	...
	21	...
	22	...
	23	...
	24	...
	25	...
	26	...
	27	...
	28	...
	29	...
	30	...

**GROUP O — GENERAL INFORMATION**

**VEHICLE IDENTIFICATION**

The Vehicle Identification Number is stamped on a plate located on the left side of the instrument panel, on the Motor Vehicle Safety Certification Plate located on the rear face of the left front pillar post (Figure 1) and on the Identification Number Plate located on the left side of the front cowl under the hood (Figure 2).

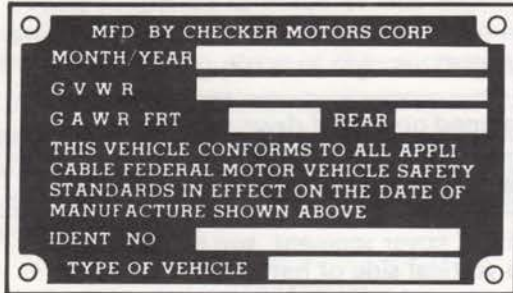


FIGURE 1—Motor Vehicle Safety Certification Plate



FIGURE 2—Identification Number Plate

The Identification Number Plate (Figure 2) also has identification numbers for the following components:

- |                 |                   |
|-----------------|-------------------|
| 1. Engine       | 5. Steering       |
| 2. Transmission | 6. Generator      |
| 3. Rear Axle    | 7. Interior Color |
| 4. Brakes       | 8. Interior Trim  |

The number at the very bottom of the Identification Number Plate is the exterior paint number.

Example: Dupont 12345

**VEHICLE IDENTIFICATION NUMBER**

The following example is a break down of the Vehicle Identification Number to aid in serving and/or ordering parts.

**EXAMPLE SERIAL NUMBER  
(A11-2244-99242A)**

A11	.....	Model ID.
2244	.....	Production Order No.
99242	.....	Serial No.
A	.....	Engine ID.

**MODEL IDENTIFICATION**

A11	.....	Taxicab-120" W.B.
A11E	.....	Taxicab-129" W.B.
A12	.....	Marathon-120" W.B.
A12E	.....	Marathon-129" W.B.

**ENGINE IDENTIFICATION**

F	.....	250 6 Cyl. - Fed. - W/ or W/O A/C
E	.....	250 6 Cyl. - Calif. - W/ or W/O A/C
A	.....	305 8 Cyl. - Fed. - W/ or W/O A/C
C	.....	350 8 Cyl. - Calif. - W/ or W/O A/C

## VEHICLE COMPONENT IDENTIFICATION NUMBER LOCATION

COMPONENT	TYPE	LOCATION
Engine	6 Cylinder	Stamped on pad at right-hand side of cylinder block at rear of distributor.
	8 Cylinder	Stamped on pad immediately forward of the right-hand cylinder head.
Transmission	Turbo Hydra-Matic 400	Tag on right-hand side of transmission case.
Rear Axle	Dana Model 44	Stamped on right axle tube, in middle.
Generator	Delco-Remy	Stamped on top of drive end frame.
Starter	Delco-Remy	Stamped on outer case, toward rear.
Battery	Delco Freedom Willard	On cell cover segment, top of battery.
		On vertical side of battery.

## KEYS AND LOCKS

Four keys are provided with each vehicle except when equipped with a deck lid "T" handle. With a deck lid "T" handle, six keys are provided. The square-head key operates the ignition switch only. The oval-head key operates all other locks except the deck lid "T" handle, if equipped; the two brass colored keys operate the deck lid "T" handle.

## LIFTING THE VEHICLE

## CAUTION

*When jacking or lifting vehicles from the frame side rails, be certain lift pads do not contact the catalytic converter or the body rocker panel as damage will result.*

## LUBRICATION AND MAINTENANCE

An Owner's Manual is provided with each vehicle at delivery.

Lubrication charts and maintenance information is provided in the Owner's Manual and should be followed to assure good vehicle performance.