

# SERVICE BULLETIN

CAB SERVICE & PARTS CORPORATION

#110

SUBSIDIARY OF  
CHECKER MOTORS  
CORPORATION

NEW YORK \* BROOKLINE  
CHICAGO \* DETROIT

April 27, 1959

Subject: STARTER MOTOR

Description: PREVENT STARTER ENGAGEMENT ( ENGINE RUNNING )

The following installation of a vacuum switch is suggested to minimize possibility of driver engaging the starter switch when engine is running, which often causes extensive damage to both the Bendix Drive Pinion Gear and Converter or Flywheel Ring Gear.

## Installation Procedure with Power Brake (See SKETCH #1)

1. Remove Fuel pump vacuum line at manifold.
2. Install fitting (Part #94533) in manifold "T" fitting.
3. Reinstall F/P vacuum line into one of the threaded holes in Part #94533, fitting.
4. Install vacuum switch (Part #01772) in other threaded hole.
5. Remove wire from center connection of starter solenoid switch. Cut off terminal and install snap terminal on wire end.
6. Make up and install new wire to vacuum switch and snap terminal other end.
7. Connect both snap terminal wire ends with snap terminal connector.
8. Install other end of wire from vacuum switch to center connection of solenoid switch.

NOTE: If an 11/32" drill and 1/8" pipe tap are available, the fitting, (Part #94533) can be eliminated by drilling and tapping a hole into the center section of the present fitting on manifold, and vacuum switch is then installed into the manifold proper. (See SKETCH #2)

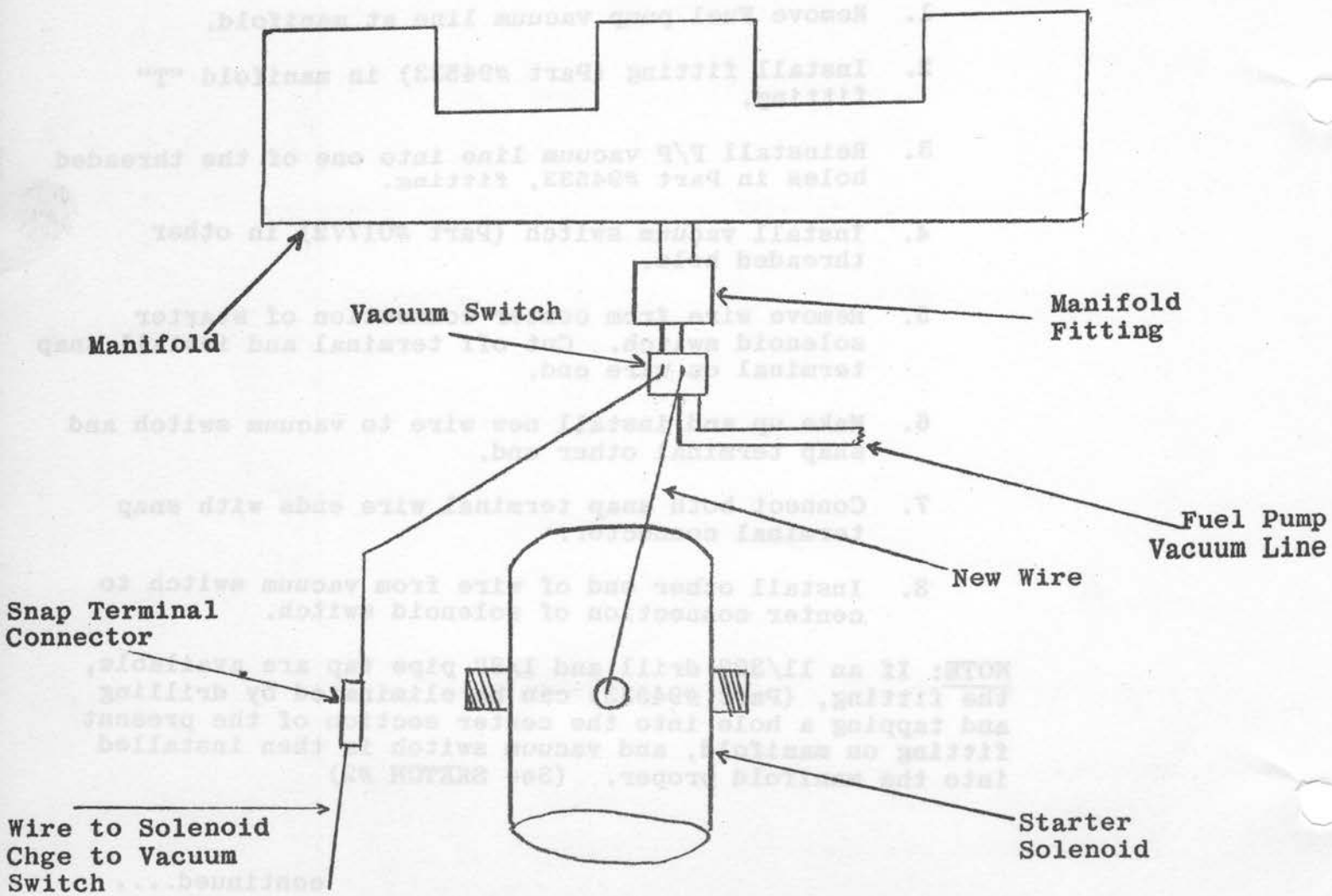
continued....

PREVENT STARTER ENGAGEMENT ( ENGINE RUNNING ) - continued

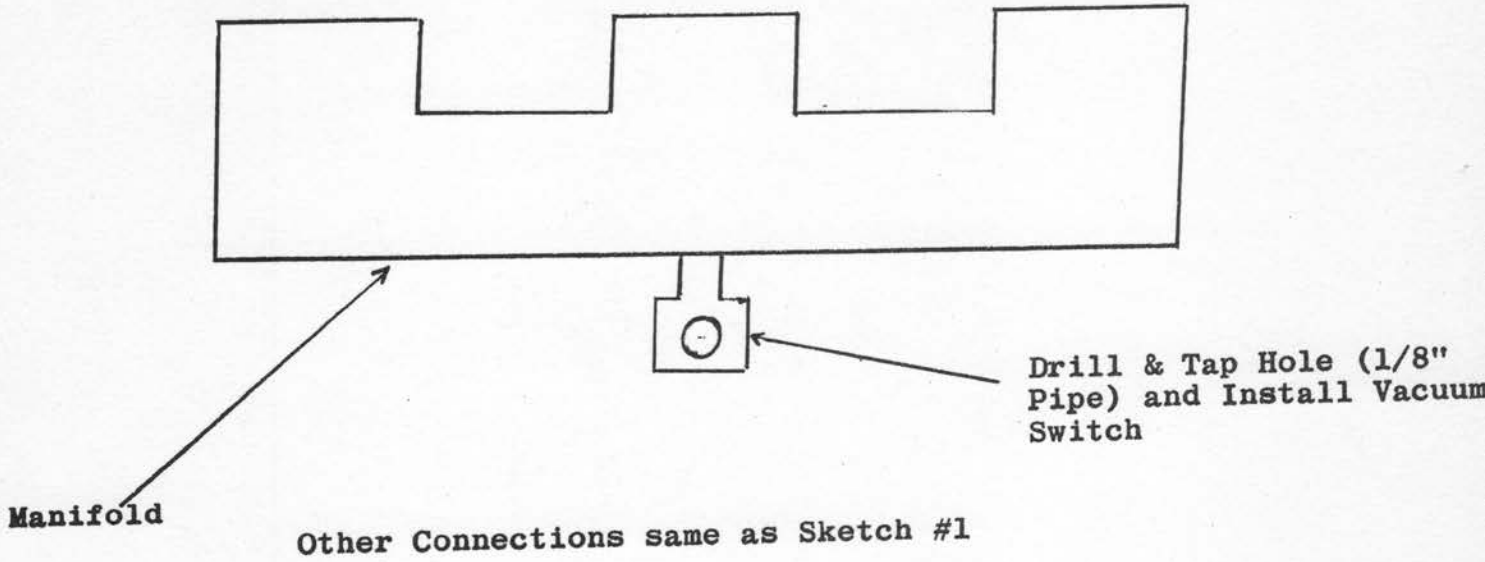
Installation Procedure - No Power Brake

1. Remove 1/4" pipe plug from manifold fitting.
2. Install a 1/4" to 1/8" reducer bushing into manifold fitting.
3. Install vacuum switch into reducer bushing.
4. Connect wiring same as in Power Brake installation.

SKETCH #1 - POWER BRAKES



SKETCH #2 POWER BRAKES - Drill & Tap Available



SKETCH #3 NO POWER BRAKES

