



1922 MODEL



1964 MODEL

CHECKER CAR CLUB OF AMERICA

DON E. McHENRY 469 TREMAINE AVE.
KENMORE, N.Y. 14217 (716) 877-3358

THE CHECKERBOARD NEWS

**A CHECKER OWNER
IS NEVER ALONE**

(1) "TECH TIPS"

A-11=Taxicab; A-11E=Taxicab/129"W.B.; A-12=Pass. Car; A-12E=Pass. Car/129"W.B.
A-12W=Station Wagon

Interchangeable Parts Listings; A-11, A-12 Series with GM. Engines
ENGINES: GM-230 CU. IN.; 283 CU. IN.; 327 CU. IN.; (Hi Perf.) 327 CU. IN. (Governed)

		<u>WATER PUMPS</u>	Checker No.	Chev. No.
8 Cyl.			08118	3848072
6 "	After Chassis #23546 Std. Trans & #23361 Auto. T.		08207	3871521 *
6 "	Before " #23547 " " #23362 " "		08045	3815726 *

*Part #3871521 & #3815726 will interchange

		<u>OIL PANS</u>	Checker#	Chev.#
6 Cyl.	230 CU. "before chassis #23362 A.T. & #23547 Std. T.		08034	3788440
6 "	" " "after " #23361 " " #23546 " "		08204	3852860
8 "	283 " "before " #24824 " " #23536 " "		08113	3788816
8 "	" " "after " #24823 " " #23535 " "		08212	3854788
8 "	327 " "-----High Performance & Aerobus-----		08212	3854788

		<u>INTAKE MANIFOLD</u>	Checker#	Chev.#
6 Cyl.	230 CU. IN.		08057	3865984
8 "	283 " " & 327 CU. IN. Aerobus-----		08121	3852585
8 "	327 " " Hi. Performance--		08365	3870394

		<u>EXHAUST MANIFOLD</u>	Checker#	Chev.#
6 Cyl.	230 CU. IN.		08052	3848948
8 "	all Left Hand-----		08125	3846559
8 "	" Right "-----		08126	3747042

Part #3747042 will interchange with Chev. #3817806 except air conditioned units. For air conditioned cars, the projecting ear must be cut off to clear the compressor.

		<u>CLUTCH ASSY.</u>	Checker#	Chev.#
6 & 8 Cyl.	Cover & Pressure Plate Assy.-----		08095	3805675 or (3819227)
" " " "	Driven Disc.-----		08094	3758678 or (3862220)
Aerobus	Cover & Pressure Plate Assy.-----		08331	3789762
"	Driven Disc.-----		08830	3789134

In addition to Chevrolet Interchange, Borg & Beck Clutch Dealers are an-
-Alternate Source

		<u>STANDARD TRANSMISSIONS</u>	Checker#	Warner Gear#
Floor Shift Spur Gear (cab)			701062	AS1-T90M
Column Shift Helical Gear (car)			701063	AS233-T86E
Overdrive (car)			701064	AS234-T86E
H.D. Column Shift Helical Gear (aero)			701463	AS3-T-85N

Car & Taxi Transmissions are Warner Gear and many components are common to American Motors, Studebaker, & Willys. Complete Transmissions are not interchangeable as assemblies. Aerobus Transmission is a Heavy Duty Warner unit and is similar to Chev. #3839637. Ford Trucks also use a similar Tra

		<u>AUTOMATIC TRANSMISSION</u>	Checker#	Warner Gear#
Limited Kickdown			701040	AS2-5AV
Dual Range			701041	AS2-8J
" " 327 Hi. Performance			701425	AS4-8J
" " " Aerobus			701353	AS6-8J

Similar W.G. units are used by American Mts., Stud., Willys and the earlier Ford Models. Complete assemblies are not interchangeable.

		<u>UNIVERSAL JOINT REPAIR KITS</u>	Checker#	Spicer#
All Models			03521	5-152X

-Interchange with GM. Kit #2362830-

		<u>REAR AXLE DIFFERENTIAL</u>	Checker#	Dana#
Car & Taxi	3.54:1 Ratio		97312	2526-1
" "	" 4.09:1 "		97316	2526-2
" "	" 3.31:1 "		97310	2526-3
" "	" 3.73:1 "		97314	2526-4
" "	" 3.54:1 " Pwr-Lok		97313	2526-5
" "	" 4.09:1 " " "		97317	2526-6
" "	" 3.31:1 " " "		97311	2526-7
" "	" 3.73:1 " " "		97315	2526-8

(1A) "TECH TIPS" (continued)

Aerobus	3.54:1	"	-----	-----	----701436	2784-1
"	"	"	Pwr-Lok	-----	----701437	2784-2
"	4.10:1	"	-----	-----	----701438	2784-3
"	4.10:1	"	Pwr-Loc	-----	----701439	2784-4

Dana-Spicer units with components interchangeable with Checker with Checker are also used by Studebaker, Ford Truck and International Harvester.

	<u>HYDRAULIC STEERING GEAR ASSY.</u>	<u>Checker#</u>	<u>Saginaw#</u>
Car & Taxi	-----	----701028	5696112
Aerobus	-----	----701029	5696119

--All Components are used in various GM Divisions Gears--

The Checker Car Club Of America was organized in May 1983 for the preservation, enjoyment, and exchange of information on Checker automobiles from 1922-1982, (ceased production). Ownership is not a prerequisite of membership. Annual Dues, \$5.00. A quarterly Newsletter is sent out. (Next newsletter in Jan. 1987)

Don E. Mchenry

"WELCOME ABOARD"

DON. E. MCHENRY: 469 TREMAINE AVE.; KENMORE, NY.; (716) 877-3358

Thanks again for your articles, help & 'advice'(in case I missed anybody). KEEP THE "BIOGRAPHS", LETTERS & ARTICLES coming. It "helps" to make a better 'Newsletter'! Next Newsletter more "Tech Tips" and complete report on the Macungie, Pa. Checker Car Club Show. "BY-THE-WAY", don't hesitate to re-run your ads. (if you haven't sold your Checker, parts & Etc.) (also "YOUR WANTS")

The checks are gone, but the seats are back.

Additional "Custom" Designs of 'Dick' Thomas' Checkers. These models are constructed on a 1977 Checker Frame, (Chassis) (A-11) ↓ ↓

Cabs from Canada

The storied—and roomy—Checker cab, once a fixture in city traffic, may be due for a comeback, at least by proxy. Four years ago, Checker Motors Corp. of Kalamazoo, Mich. stopped making them because they could no longer meet government fuel economy standards, leaving the field to converted stock passenger cars. Checker's last redesign of its classic Prohibition Era cab was in 1954 and it sold 10,000 of them a year in the mid-Seventies, but that had dropped to 4,500 a year by 1981. (It now stamps metal parts for autos.) A.H.A. Automotive Technologies, a Toronto maker of limousines, ambulances and other specialized vehicles, hopes to bring back a six-passenger cab, with two facing bench seats in the rear. A.H.A. expects to sell 1,000 cabs in the 1987 model year, says its president, Melvyn Stein. Next year it will make 2,000 of its Checker-style cabs and eventually hopes to build about 5,000 a year, he says. That would be 12.5% of the 40,000-a-year U.S. taxi market, and at \$20,000 a car, would put A.H.A.'s \$40 million annual sales into overdrive. FORBES, OCTOBER 6, 1986

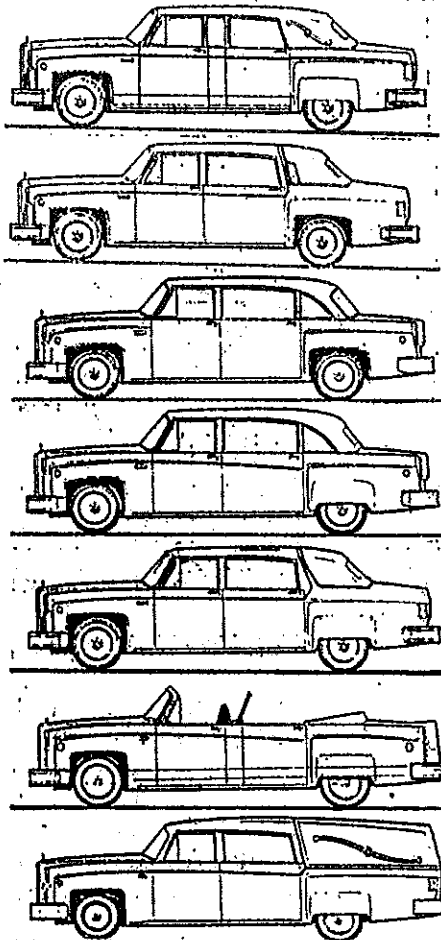
← "GOOD NEWS"



ITEM	MILEAGE
LUBE	
OIL FILTER	
AIR CLEANER	
MOTOR OIL	

DATE: SAE:

#6551949



"TECH TIPS" (continued) (2)

<u>POWER STEERING PUMPS</u>		<u>Checker#</u>	<u>Saginaw#</u>
All Models -----		701091	5694573
All components except discharge fittings are used on various GM Div. pumps			
<u>STEERING GEAR ASSY.- STD.</u>		<u>Checker#</u>	<u>SAGINAW#</u>
Car & Taxi -----		701027	5679270
All Components are used in various GM Division's gears.			
<u>MASTER-VAC ASSY.</u>		<u>Checker#</u>	<u>BENDIX#</u>
6 Cyl. Car & Taxi -----		701092	2503275
8 " All Models -----		97614	2502935
Use GM Repair Kit #2502893. Complete Booster Assys. not interchangeable. Similar Master-Vacs also used on Ford & Chrysler Products.			
<u>FUEL PUMP ASSY.</u>		<u>Checker#</u>	<u>Carter#</u>
6 Cyl. -----		701071	M3530 S
8 " 283 & Aerobus-----		701072	M3028 S
---Parts available from Local Carter Carb. Dealer---			
<u>FUEL PUMP ASSY.</u>		<u>Checker#</u>	<u>A.C.#</u>
8 Cyl. 327 Hi. Performance -		05033	5621665
--- Use GM Repair Kit #5622175---			
<u>FUEL FILTER ASSY.</u>		<u>Checker#</u>	<u>Carter#</u>
All Models-----		701070	F 3901 S
---Parts available from Local Carter Carb. Dealer---			
<u>CARBURETOR ASSY.</u>		<u>Checker#</u>	<u>Carter#</u>
6 Cyl. Taxi-----		701033	YF 3933S
---Parts available from local Carter Carb Dealer---			
<u>CARBURATOR ASSY.</u>		<u>Checker#</u>	<u>Rochester#</u>
6 Cyl. Car & Taxi -----		04344	7031434
8 " 283 Car & Taxi-----		04340	7029703
" " 327 Hi Performance----		07758	7025185
" " Aerobus -----		07754	7025089
---Parts available from GM & United Motors Dealers---			
<u>IGNITION COIL ASSY.</u>		<u>Checker#</u>	<u>Delco#</u>
6 & 8 Cyl.-----		08558	1115087
" " Car & Taxi 1964-'71-		701907	1115203
8 " All Models " -'67-		701081	1115204
" " " " -1968-'71-		701958	1115195
Parts available from GM & United Motors Dealers			
<u>IGNITION BALLAST</u>		<u>Checker#</u>	<u>Delco#</u>
6 & 8 Cyl. Car & Taxi-----		701082	1957154
" " All Models 1967-71-		701959	1958729
---Available from GM & United Motors Dealers---			
<u>STARTING MOTOR ASSY. (Std, Trans.)</u>		<u>Checker#</u>	<u>Delco#</u>
6-Cyl. 230 Cu. " Before Ch.#43952 1964-66 -----		701077	1107273
6-Cyl. " " Ch.#43952-#48425 1967 -----		701752	1107497
6-Cyl. " " & 250 Cu. In. Ch.#48421-#01000, 1968-69		701947	1108368
8-Cyl. 283 " " Before Ch.#43953 1964-66 -----		701077	1107273
8-Cyl. " " Ch.#43953-#48425 1967 -----		701752	1107497
8-Cyl. 307 & 327 Cu. In. Ch.#48426-#01000, 1968-69 ----		701947	1108368
8-Cyl. 327 Cu. In. Aero. Before Ch.#2555, 1964-67 --		701475#	1107274
8-Cyl. 327 " " & 350 Cu. In. Ch.#2556, 1968-70 -----		701950	1108360
<u>STARTING MOTOR ASSY.-AUTOMATIC TRANSMISSION</u>		<u>Checker#</u>	<u>Delco#</u>
6-Cyl. 230 Cu.-In. Before Ch.#43998 1964-66 -----		701078+	1107259
" " " " Ch.#43999-#48818 1967 -----		701753+	1107399
" " " " " #48819, 1968-71 --- -----		701948+	1108365
8 " 283 " " Before Ch.#44131, 1964-66 -----		701079+	1107247
" " " " " Ch.#44132-#80175, 1967 -----		701751+	1107247
" " 307, 327 Cu. In. Ch.#80176-#01000, 1968-69 ---		701949+	1108367
" " 327, 350 Hi-Perf. Before Ch.#80228, 1965-67 -		701365	1107320
" " " " Cu. In. Aero, Before Ch.#2558, 1964-67		701365	1107320
" " " " Hi.-Perf. Ch.#80229-#01000, 1968-69		701951	1108361
" " " " Cu. In. Aero-After Ch.#2559, 1968-70		701951	1108361
" " 350 CU. In. After Ch. #01000-#0101, 1970-71		703440	1108420
---Service Replacement Items for + -----		010300	1108366
--- " " " " # -----		010301	1108372
-----Brushes for all above-----		04261	1906945
Armature-Pré 3 #'s(701)077-078-079-475-365-752-753-751-08564			1955937

FLEET PRICES REDUCED!

DESCRIPTION/APPLICATION	ORDER IN QUANTITIES OF	ORDER NUMBER	FLEET PRICE	SALE PRICE EACH
Thermostat, All Checker, All Chevrolet, '90*	24	08431-F3	2.49	1.19 EACH
Breather Filter with Clip All Checker, All Chevrolet	24	05134-F3	.78	.49 EACH
Air Filter, 229 V6	12	05932-F3	2.95	1.99 EACH
Air Filter, 305 V8	12	6484235-F3	4.31	1.99 EACH
Air Filter, 4.3 L V6 (1985)	12	6483645-F3	2.95	1.99 EACH
U-Joint (Front) All Checker	6	010752-F3	7.90	4.99 EACH
U-Joint (Rear) All Checker	6	03521-F3	6.99	4.99 EACH
Sealed Beam (Low) All Checker	12	03900-F3	3.79	1.99 EACH
Sealed Beam (High) All Checker	12	03901-F3	3.79	1.99 EACH
Sealed Beam (Low) '82-'85 Chevrolet	12	5968201-F3	5.99	4.49 EACH
Sealed Beam (High) '82-'85 Chevrolet	12	5968200-F3	5.99	4.49 EACH
Timing chain, 229 V6, 305 V8	4	09505-F3	15.47	9.99 EACH
Flywheel, 229 V6, 305 V8	4	09585-F3	34.61	19.99 EACH
Camshaft, 229 V6	1	13394-F3	98.95	45.00 EACH
Crankshaft (New) 229 V6	1	13364-F3	328.48	239.00 EACH
Coil Springs (Rear), '82-'85 Chevrolet Sold in pairs only	1 pair	482088-F3	47.08	39.99 EACH
Fuel Pump, 229 V6	6	707255-F3	12.00	9.95 EACH
Ignition Coil, 229 V6 305 V8	4	10408-F3	47.50	14.95 EACH

MONROE SHOCKS

CHECKER CHEVROLET



\$7.95 EACH

FRONT 705395

FRONT 4993550

REG.: \$9.99 and \$10.49

DESCRIPTION/APPLICATION	ORDER IN QUANTITIES OF	ORDER NUMBER	FLEET PRICE	SALE PRICE EACH
Water pump, Rebuilt 229 V6	6	RX3913-F3	20.26	14.95 EACH
Muffler, All Checker	12	705527-F3	28.20	19.99 EACH
Blower Motor, Checker '77-'82	6	11830-F3	27.07	19.95 EACH
U-Joint, Front/Rear '82-'85 Chevrolet	6	374246-F3	6.26	4.99 EACH
Rear Brake Drum, Heavy Duty, (New) '71-'82 Checker	2	703723-F3	68.10	39.99 EACH
Master Cylinder Repair Kit '81-'82 Checker	6	12922-F3	6.83	5.99 EACH
Rear Brake Cylinder '79-'82 Checker, '81-'85 Chevrolet	6	12912-F3	8.91	6.99 EACH
Bendix Lined Disc Brake pads, All Checker & '80-'85 Chevrolet with Taxicab package	12 sets	X4253-F3	7.46	5.95 EACH
Bendix Lined Brake Shoes, Rebuilt, 11", All Checker & '80-'85 Chevrolet with Taxicab Pkg.	12 sets	X4254-F3	11.21	7.95 EACH
Inner Tie Rod, '82-'85 Chevrolet	6	7834224-F3	12.74	8.99 EACH
Outer Tie Rod, '82-'85 Chevrolet	6	12308612-F3	10.85	8.99 EACH
Idler Arm, '82-'85 Chevrolet.	6	7837635-F3	28.98	14.99 EACH
Center Link, '82-'85 Chevrolet	3	7837639-F3	76.00	39.99 EACH
Upper Ball Joint '82-'85 Chevrolet	6	9767112-F3	14.98	8.99 EACH
Lower Ball Joint '82-'85 Chevrolet	6	9767113-F3	14.98	9.99 EACH
Radiator, '81-'84 Chevrolet 229 V6 (Heavy Duty)	1	3042850-F3	157.50	99.95 EACH
1157 Bulbs	200	9417867-F3	.45	.26 EACH

In some cases Chevrolet OE part numbers are utilized. This is done so that cross referencing may be kept to a minimum and does not infer that such parts are manufactured by General Motors. *Plus \$10.00 refundable core charge

**1157 WEST MONROE
CHICAGO, IL 60607**



**SALE ENDS
JUNE 15, 1985**

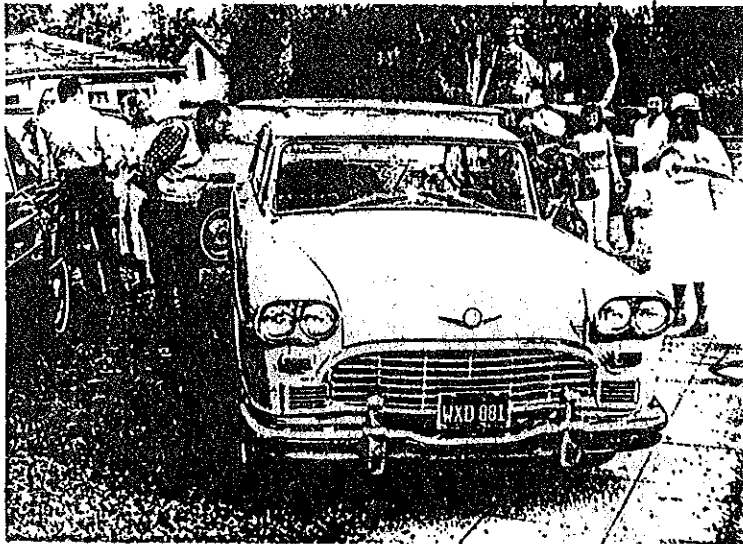
EXTENDED UNTIL JULY 15th

CAB SERVICE & PARTS

"AREN'T THEY BEAUTIES" ?????



KATHRYN BASSETTS' Calif. CHECKER PARTY
(April 26, 1986)



- #1 KATHRYN FONTENO (BACK TURNED)
- #2 BEV GUIDA
- #3 MARY GUIDA
- # 4 KATHRYN BASSETT (HOSTESS)

KATHRYN FONTENO'S 1967 CHECKER MARATHON SEDAN

- #1 BILL GRIFFY (KATHRYN BASSETT'S STEPFATHER)
- #2 KATHRYN FONTENO (SOUTH PASADENA)
- #3 FRED WOODS (PORTOLA VALLEY)
- #4 & 5 MARV & BEV GUIDA (ANAHEIM)
- #6 HARRIET WOODS (FRED'S WIFE)
- #7 LYN BRIGGS (SAN DIEGO)
- #8 WOODY FONTENO (KATHRYN'S HUSBAND)
- #9 CASEY WILLIAMS (NEWEST & YOUNGEST CHECKER OWNER) (SERVICE MAN FROM PORT HUENEME)
- #10 STEVE MC CLEAD (NEWBURY PARK)
- #11 TOM PERKINS (PASADENA) -NEIGHBOR OF BASSETT
- #12 & 13 MC DANIEL (?)
- #14 DAVE MARGOLIN (STUDIO CITY);
- #15 CY ALLEN (COVINA)

"KATHRYN BASSETTS" Calif. CHECKER PARTY
(April 26, 1986)

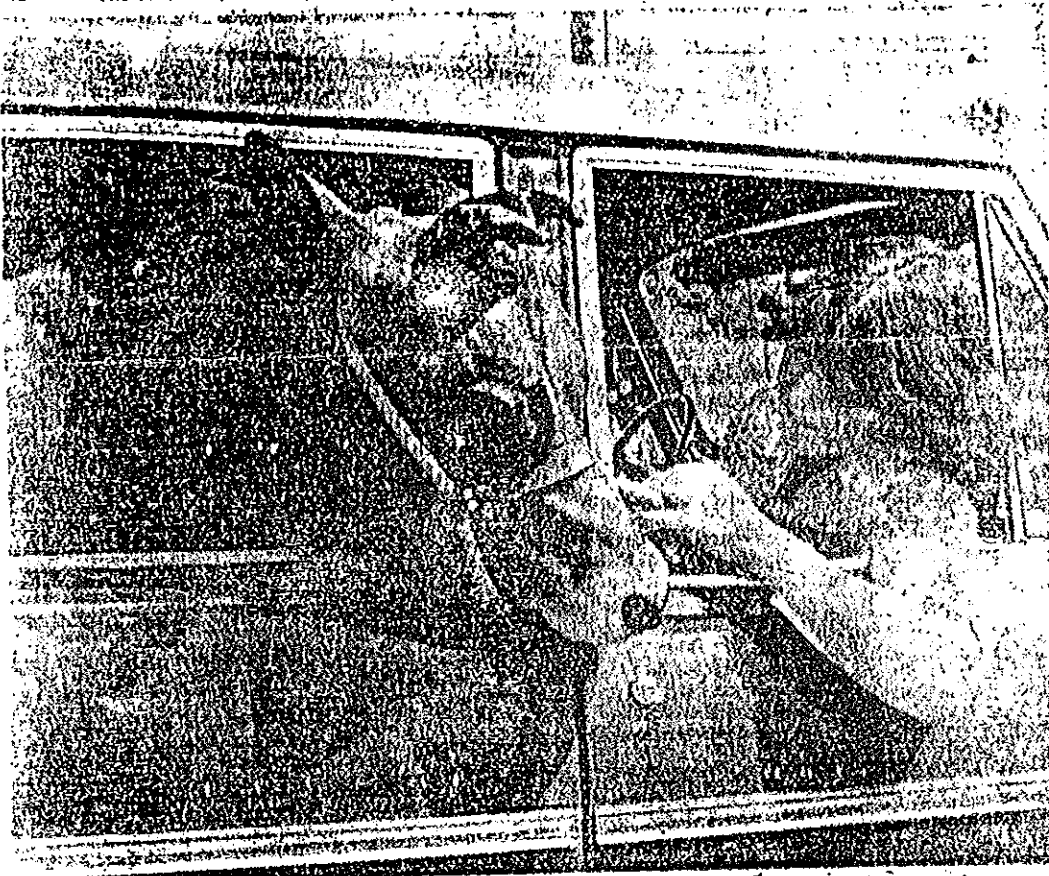
(9)



"A CHECKER OWNER IS NEVER ALONE"!!!
 (????)

46

The GAZETTE, Montreal, Mon., Sept. 11, 1978



CP Wirephoto

Travelling in style

In the fall, many calves travel to country fairs in Canada. Jersey calf Jinny. They travel in the back of a limousine owned by Stacey's dad, a Brantford, Ont., veterinarian. But few go in the style of 14-year-old Stacey Smiths.
HOORAY "For those 'roomy' Checkers!! (thank you)(I 'forgot'who)



DON E. MCHENRY
89 TREMAINE AVENUE
KENMORE, N.Y. 14217

OFFICE OF 1985 ISSUES
1985-7

