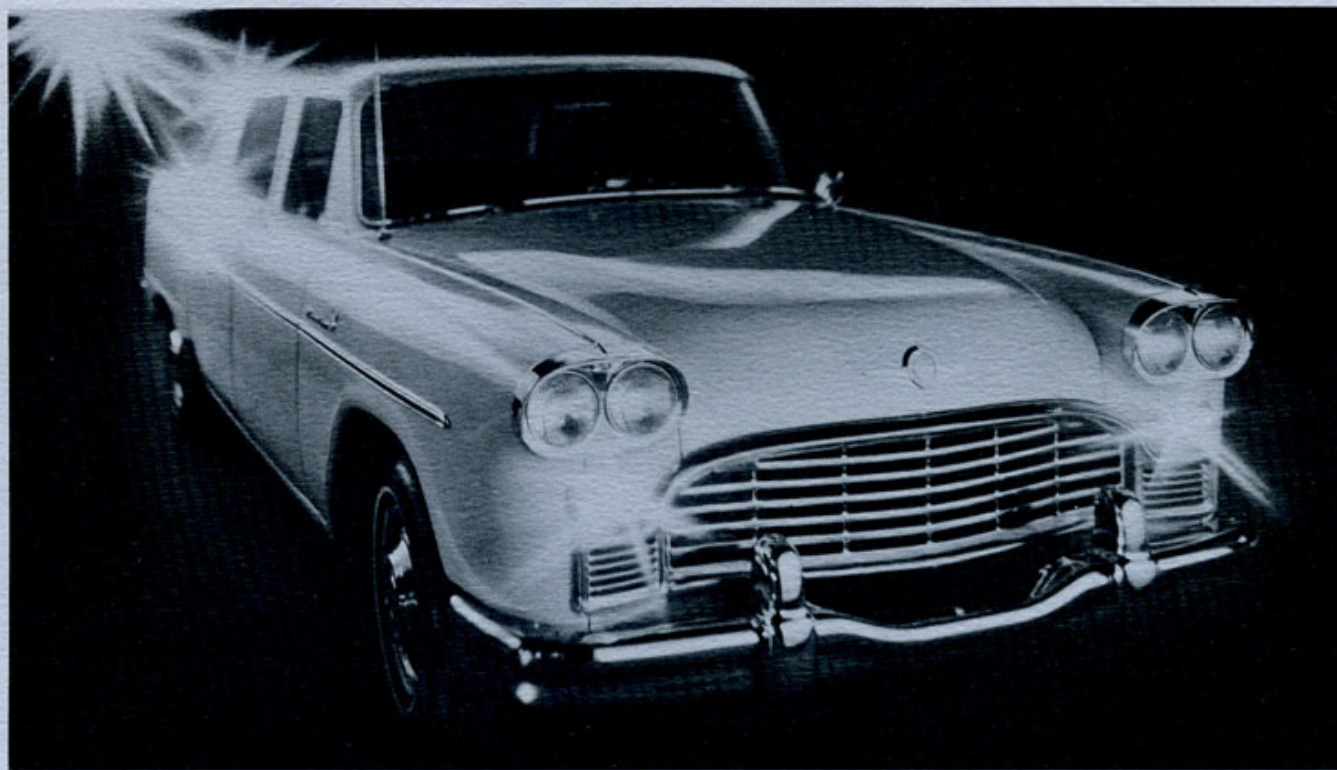


The Checker Marathon

**the perfect family car, fleet car,
business car, economy car, luxury car.**



The Checker Marathon is built like cars used to be built. Only Checker has huge door openings that let you get in and out without contortions or backbends. Only Checker seats eight adult passengers in rambling ranch-like interiors. Checker has limousine-like appointments that challenge cars costing thousands more.

People who have bought Checkers have described them as ingenious cars. Less than 200" long, the Marathon has an amazing ability to corner like a sports car, maneuver through city traffic like a taxicab, park like a compact.

Exterior styling rarely changes, but improvements in safety, performance and economy are being made constantly. 46 years of tough, demanding fleet experience is behind every Checker Marathon car. Test-drive the Checker—4-door sedans, station wagons, limousines and Aerobuses—built by one of America's most experienced manufacturers.

The Checker Marathon



The Checker Marathon is built like cars used to be built. Only Checker has huge door openings that let you get in and out without contortions or backbends. Only Checker seats eight adult passengers in rambling ranch-like interiors. Checker has limousine-like appointments that challenge cars costing thousands more.

People who have bought Checkers have described them as ingenious cars. Less than 200" long, the Marathon has an amazing ability to corner like a sports car, maneuver through city traffic like a taxicab, park like a compact.

Exterior styling rarely changes, but improvements in safety, performance and economy are being made constantly. Nearly 50 years of tough, demanding fleet experience is behind every Checker Marathon sedan and station wagon; half a century of creating vehicles primarily for passenger comfort, convenience and safety means greater value now, next year, in five years.

Test-drive the Checker 4-door sedans, station wagons and limousines—built by one of America's most experienced manufacturers.

Checklist of Features

Superior Chassis Features:

1. Balanced chassis—built stronger, built better—built to give an extra measure of safety, long life and security.
2. Less than 17 feet long—a foot shorter than most other cars! No useless overhang; no unused space means a roomier interior.
3. Super-strong, double channel X-brace frame—for greater strength, stability, safety.
4. Wide track design combined with front stab-

lizer bar means greater stability, better roadability, easier handling.

5. 15" wheels mean better road clearance, longer tire life.
6. 2 engines—standard 155 h.p. overhead valve six and optional 250 h.p. economy V-8.
7. Automatic transmission—fleet-proven for trouble-free operation.

8. Dependable heavy-duty, fleet-proven parts, designed for longer life, better performance.

9. Independent heavy-duty coil front suspension system gives smoother ride.
10. Five-leaf semi-elliptical springs—wider, more resilient than most other springs.
11. Brakes are fleet-proven for sure, safe stopping power.
12. Greater windshield area in front and rear means greater visibility.

Superior Body Features:

1. Limousine-size interiors; sedans have room for eight adults in complete comfort and with plenty of headroom, legroom, hiproom (with optional folding rear seats).
2. Straight-line door design combined with higher, wider door openings means easiest entry and exit of any car.
3. Driver sits in chair-high seat with safer, more commanding view of road.

4. Rear floors are virtually flat for even more comfort and room.

5. Fiberglass insulation in roof, panels, dash, hood and floor softens road noises.
6. Bumpers that are functional and practical—are not used merely as decoration.
7. Durable, contemporary styled upholstered seats with coil springs combined with foam cushioning give firm yet comfortable seating.

8. Instrument panel features easy-to-read circular gauges in classic cluster.

9. Bolt-on fenders mean less costly, faster replacement when needed.
10. Positive rustproofing process guards against rust and corrosion.
11. Timeless, classic styling; the Checker is not obsolete by yearly model changes.
12. Energy-absorbing steering column.

Marathon Standard Equipment

- 35-Amp Alternator
- Padded Arm Rests
- Back-up Lights
- 50-Amp Battery
- Foot Operated Parking Brake
- Dual Master Cylinder Brake System
- Carpeted Floor Throughout
- Automatic Choke
- Cigar Lighter
- Wide Track Design
- One-Piece Drive Shaft
- Double Channel X-Brace Frame
- 6 Cylinder 155 h.p. 250 cu. in. OHV Engine
- Acrylic Lacquer Finish
- 23-Gallon Gas Tank
- Safety-Plate Glass
- 2 Shoulder Harnesses, Front
- Head Restraints
- Fresh-Air Heater and Defroster
- Padded Instrument Panel
- Soundproofing Insulation
- Safety Door Locks
- Outside Rearview Mirror
- Oil Filters
- Seat Belts, Front and Rear (6)
- Side Marker Reflectors
- Direction and Lane Change Signals

- Double-Action Shock Absorbers
- Front Stabilizer Bar
- Energy-Absorbing, Anti-Theft Steering Column
- Recirculating Ball Steering Gear
- Assist Straps
- Dual Sun Visors, Padded
- Front Independent Coil Suspension
- 5-Leaf Rear Spring Suspension
- Emergency Warning Switch
- 8.25 x 15 2-ply (4-ply Rating) Tubeless Blackwall Tires
- Undercoating
- Vinyl and Nylon or All-Vinyl Upholstery
- Hydraulic Valve Lifters
- 15" Wheels
- 2-Speed Electric Windshield Washers and Wipers

Engine Specifications

155 H.P., 250 Cu. In. Overhead Valve Six

Type: 6 Cylinder Overhead Valve

Horsepower: 155 BHP @ 4200 rpm

Compression Ratio: 8.50 to 1

Piston Displacement: 250 cu. in.

Carburetor: Downdraft, with automatic choke

Recommended Fuel: Regular

Cooling System: 12 qts. with heater

Optional Engine—350 Cu. In.

Type: 8 Cylinder Overhead Valve (V-8)

Horsepower: 250 BHP @ 4800 rpm

Compression Ratio: 9.00 to 1

Piston Displacement: 350 cu. in.

Carburetor: Downdraft, 2 barrel, with automatic choke

Recommended Fuel: Regular

Cooling System: 17 qts. with heater

Checker Motors Corp.

Kalamazoo, Michigan 49007

Specifications subject to change without notice

