

REAR SUSPENSION

SECTION I. SPRINGS

1-1. Removal.

- Raise the rear of the vehicle and support the frame with trestles. Support the rear axle.
- Disconnect each rear shock absorber from the lower shock absorber mounting bracket.
- Remove the rear spring clip nuts and spring clips. Remove the spring clip plate.
- Remove nuts from rear shackle plate and pin assembly. Remove outer shackle plate and bushings.
- Remove nuts and lockwashers from rear spring

front frame bracket and remove bracket from the frame.

- Remove spring from vehicle.
- If necessary, disassemble front bearing and spring from bracket.
- Inspect rear spring shackle bracket. Inspect bumper assembly. Replace if worn or damaged.
- Clean all parts. Pry spring leaves apart to inspect bearing surfaces. Check shackle plate pins and bushings for wear or damage. Replace all damaged parts.

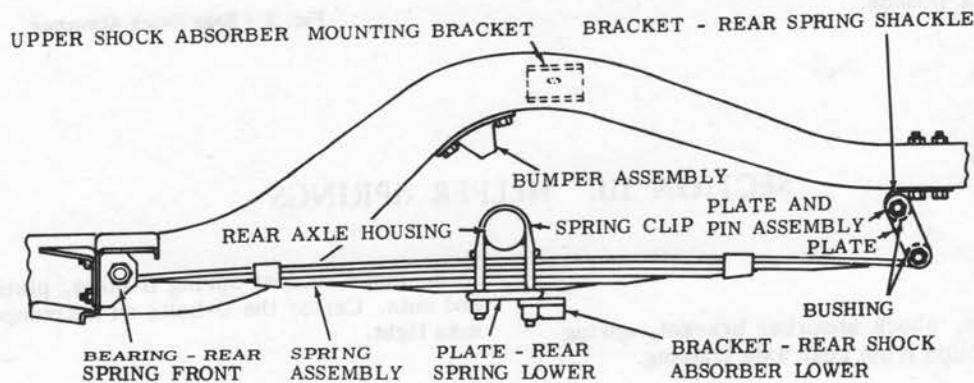


Fig. 1 - Rear Spring Assembly

1-2. Installation.

- Replace bumper assembly and rear spring shackle bracket, if removed.
- Reassemble front frame bracket, bearing, and spring.
- Install spring eye on rear shackle pin. Reinstall front frame bracket.

d. Install shackle plate and bushings. Tighten shackle plate nuts finger tight.

e. Install spring plate, spring clips, and shock absorber bracket. Torque spring clip nuts to 60-75 foot-pounds.

f. Lower the vehicle to settle its weight on the springs. Then torque the shackle plate nuts to 60-70 foot-pounds.

SECTION II. SHOCK ABSORBERS

2-1. Removal.

- Remove the stamp nut, mounting nut, retaining washer, and outer insulator from the lower end of the shock absorber at the lower shock absorber bracket.

b. Remove the stamp nut, mounting nut, retaining washer, and outer insulator from the top of the shock absorber at the upper mounting bracket.

c. Collapse the shock absorber and remove from the vehicle.

2-2. Testing.

- Clamp the lower end of the shock absorber vertically in a soft-jawed vise.
- Operate the shock absorber by hand in both directions. Shock absorber should have steady drag in both directions, with no binding. If binding or free pumping condition exists, replace shock absorber.

2-3. Installation.

- Position one retaining washer and one insulator on each end of shock absorber.
- Collapse shock absorber and position it in upper and lower mounting brackets.
- Install insulators, retaining washers, mounting nuts, and stamp nuts on both ends of shock absorber. Torque mounting nuts to 16-20 foot-pounds. Torque stamp nuts to 2 foot-pounds.

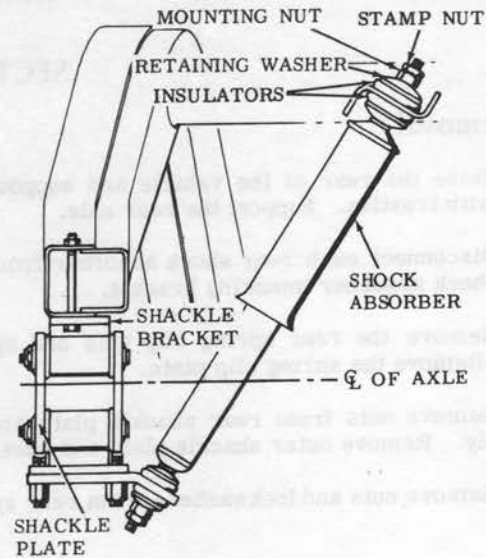


Fig. 2 - Rear Shock Absorber

SECTION III. HELPER SPRINGS

3-1. Installation.

- Remove nuts, shock absorber bracket, spring plate, and spring clips from rear axle housing.
- Install helper springs using longer spring clips. Align helper spring with second spring leaf at rear of vehicle. Replace spring plate, shock absorber mounting bracket, and nuts.
- Position bumpers atop helper springs, large face down.

- Install helper spring U-bolts, plates, washers, and nuts. Center the U-bolts on the bumpers and draw nuts tight.

3-2. Removal.

To remove helper springs, reverse the order of installation.

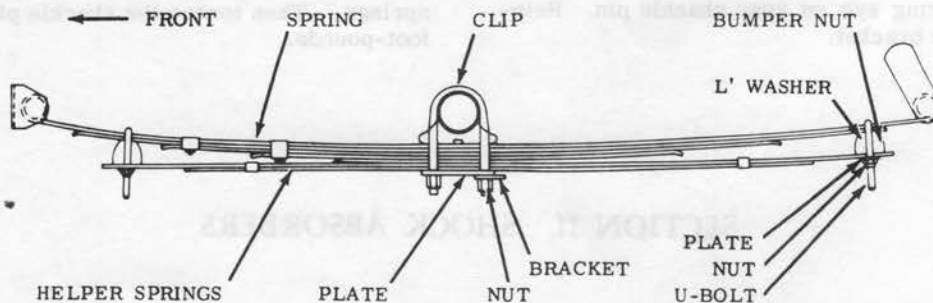


Fig. 3 - Helper Springs