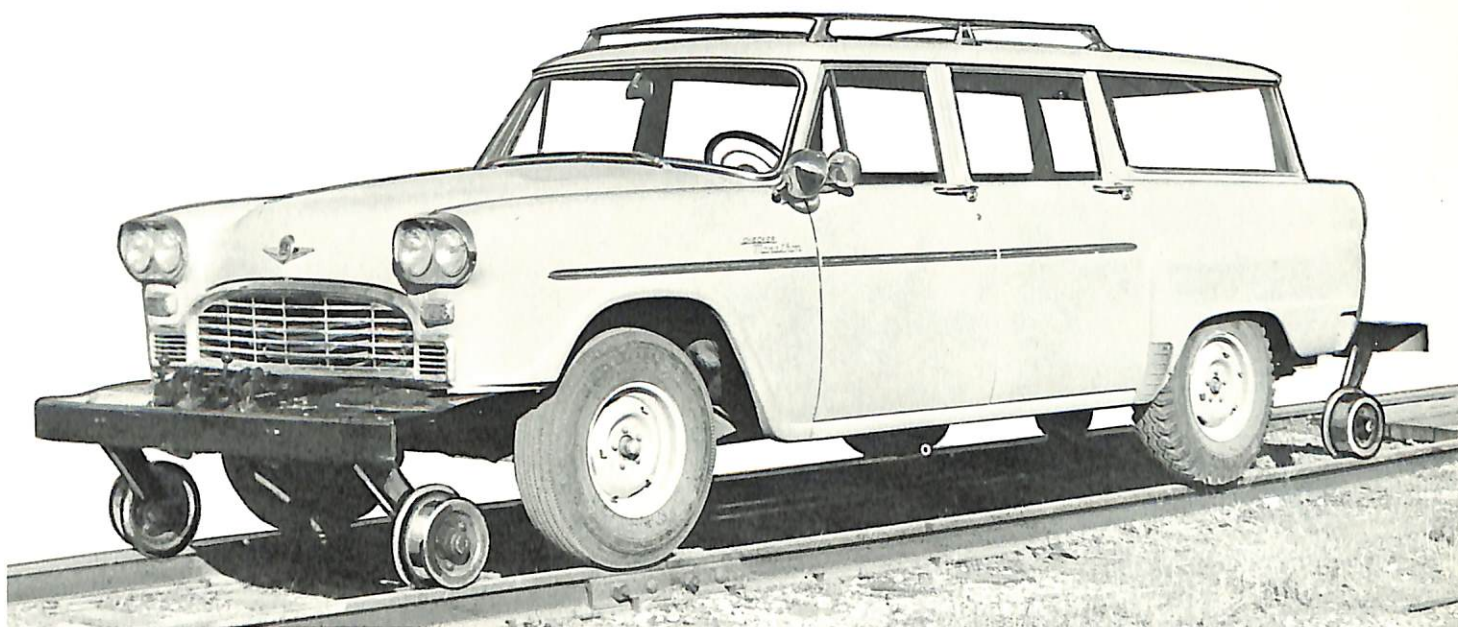


Fairmont

HY-RAIL® EQUIPMENT - MANUALLY OPERATED

For Station Wagons, Sedans and 1/2 and 3/4 Ton Trucks



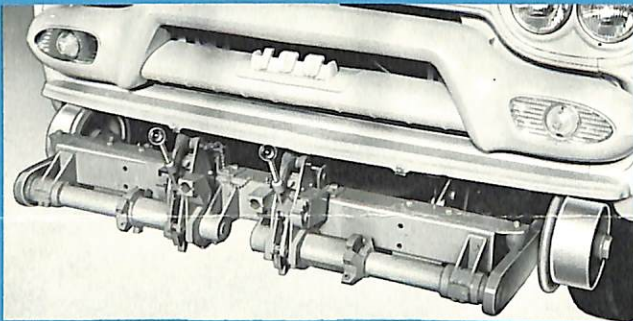
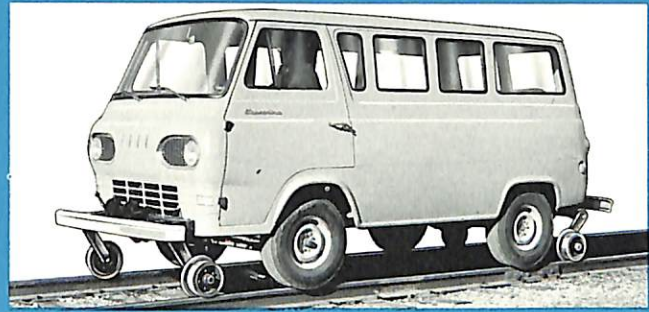
For Best Highway - Railway Operations of Inspection, Patrol and Maintenance Vehicles

Pictured here are typical installations of the FAIRMONT Manually Operated HY-RAIL® Equipment. It is of proven design with rugged construction. This equipment has load bearing guide wheels that turn on taper roller bearings and are supported on the vehicle frame. Guide wheels have independent action, and the load is applied through a rubber cushion torque unit that is easily adjusted and gives a cushioning effect. These guide wheels are raised and lowered manually, and are held in position by a husky mechanical lock. A hand operated steering wheel lock is mounted on the steering column.

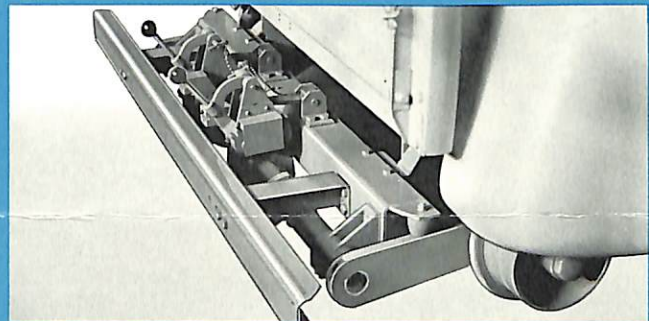
For high quality and dependability, specify Fairmont HY-RAIL® equipment. It is supplied three ways: As a field application group to be mounted by the purchaser, applied in our shops to railroad owned vehicles, or furnished as a complete unit of car or truck with the rail equipment in place.



FAIRMONT
RAILWAY
MOTORS, Inc.
FAIRMONT, MINN.



Front Assembly with Bumper Removed



Assembly on Rear of Pickup Truck

Fairmont HY-RAIL® equipment can be mounted on many Station Wagons, Sedans and most 1/2 and 3/4 ton pickup trucks. It can also be applied on one ton trucks where the GVW does not exceed 7,800 lbs. Two basic requirements for the application are: That the pneumatic wheel tread (spacing) is suitable for or can be altered to meet on-track needs, and the frame is within specific limits. Normally the station wagons are fitted with rubber tread guide wheels while the trucks have steel guide wheels. Usually the vehicle must have modified wheels for the pneumatic tires (or wheel spacers) to give the proper tread or wheel spacing for on-track operation. Most units also require heavy duty springs, and often there are certain other variables that should be specified at the time the vehicle is ordered. Pneumatic tires should conform to our recommendations for best results. A rear bumper is included in the truck groups, and station wagon installations have front and rear bumpers, and splash plates between bumper and body.

FAIRMONT RAILWAY MOTORS, INC., Fairmont, Minn., U.S.A.

FAIRMONT RAILWAY MOTORS, LTD., ISLINGTON, ONT., CANADA

Printed in U.S.A.