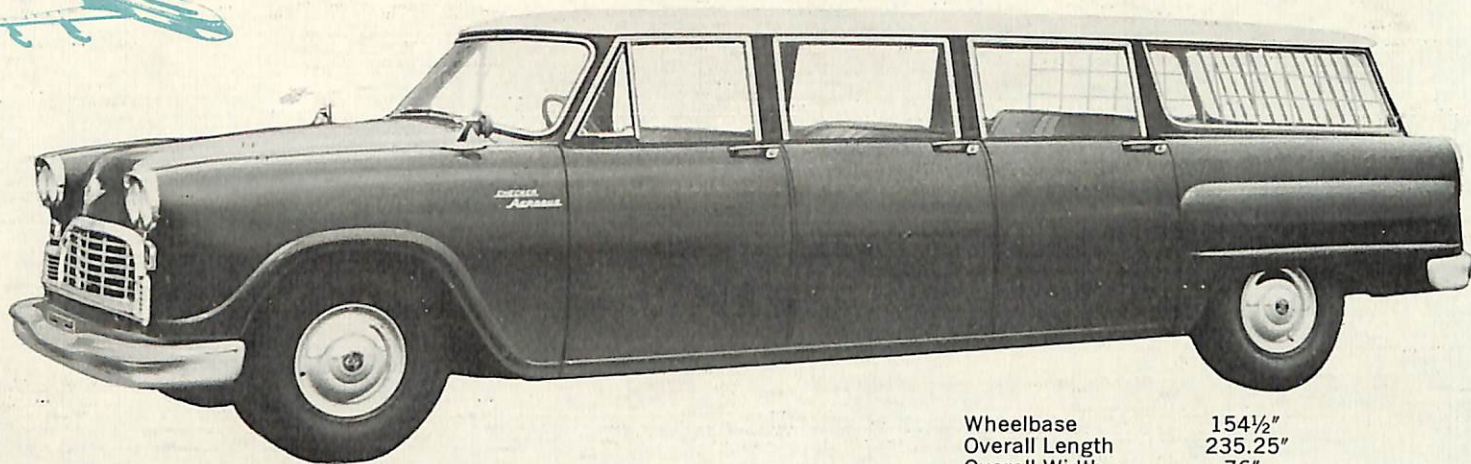


Not A "Stretch-Out"—But "A Built-For-The-Purpose-Limousine."



9 PASSENGER AEROBUS

Wheelbase	154½"
Overall Length	235.25"
Overall Width	76"
Overall Height	62.2"
Curb Weight	4330 lbs.
Cargo Volume	93.06 cu. ft.
Front Headroom	34.75"

THE CHECKER AEROBUS

THE TAXI-PROVEN LIMOUSINE THAT'S BUILT TO BE A LIMOUSINE

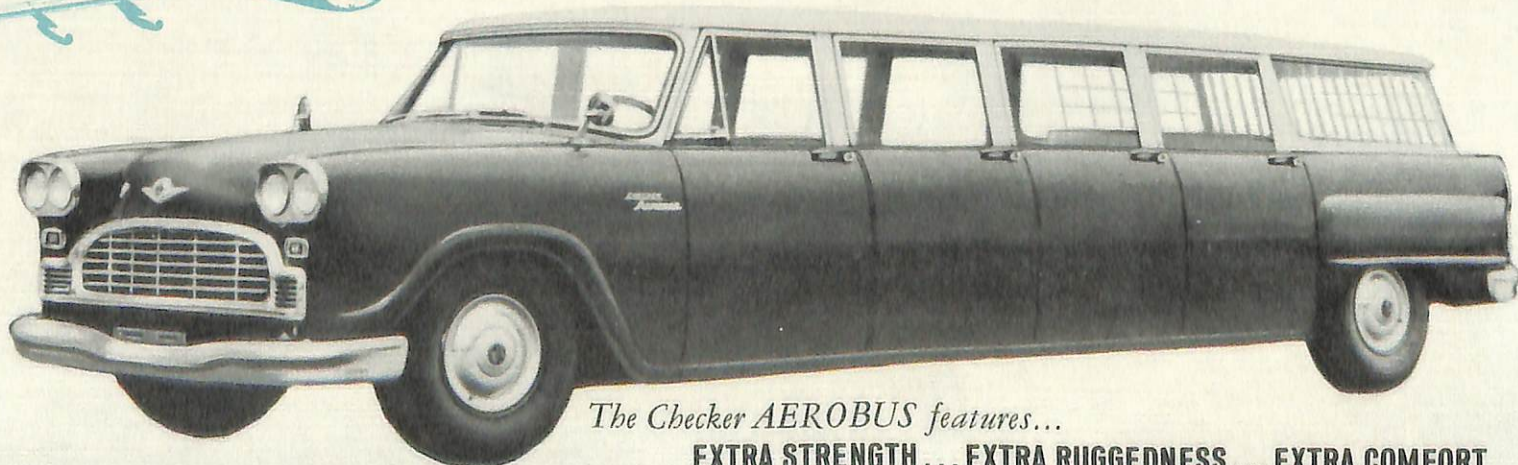
Checker doesn't merely convert standard sedans and call them limousines. Checker designs, engineers and builds an authentic limousine and calls it the Aerobus. The new Checker Aerobus is every inch a limousine, built for the purpose from the ground up.

Checker's new Aerobus combines the luxury and comfort of a limousine with the economy of a passenger car and the durability of a taxi. Built with pride by the makers of the famed Checker

cab, the Aerobus is available in 9 and 12 passenger models. Maintenance and repair costs are remarkably low, the life of the Aerobus is incredibly long. This purpose-built limousine gives you years of virtually trouble-free, payload performance.

When you buy a Checker Aerobus, you get what you pay for . . . a limousine that's *built* to be a limousine.

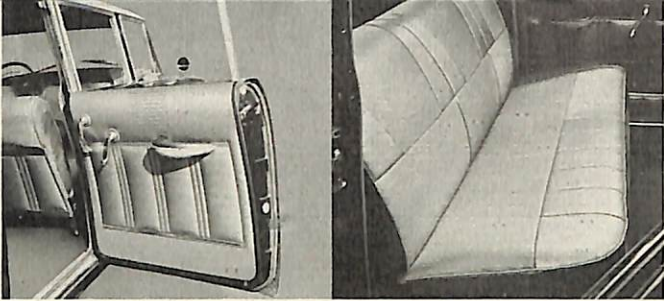
12 PASSENGER AEROBUS



Wheelbase	189"
Overall Length	269.75"
Overall Width	76"
Overall Height	62.2"
Curb Weight	4788 lbs.
Cargo Volume	93.06 cu. ft.
Front Headroom	34.75"

The Checker AEROBUS features...

EXTRA STRENGTH . . . EXTRA RUGGEDNESS . . . EXTRA COMFORT

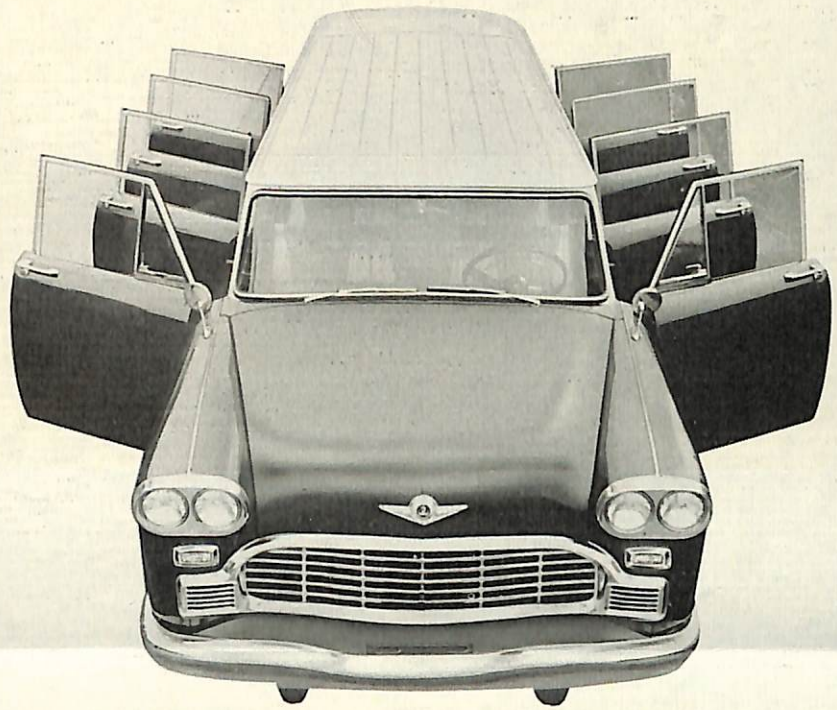


Remarkably durable, highest quality vinyl is used unsparingly throughout the handsomely designed interior of the Aerobus. Interior of door shown here is standard equipment on both models.

Seats of deep, comfortable, foam rubber are covered with highly durable, color coordinated, scuff-resistant vinyl. Seat shown here is standard equipment.



The Aerobus luggage compartment is partitioned off from the passenger area for additional passenger comfort and load carrying convenience. Horizontal and vertical strips of stainless steel prevent damage to windows or to the luggage.



Wider door openings . . . wider seats . . . more hip room and more head room . . . these features along with the newly created luxurious interiors, welcome your riders to the Checker Aerobus . . . *the new standard for transporting people.*



There's room for everybody and everything in the Spacious and Comfortable

CHECKER AEROBUS

Nine people or 12 people and all their luggage put no strain on the capacity of the spacious Aerobus. There's plenty of room for everybody, and everybody rides in real Checker comfort all the way.

The beauty of the Checker Aerobus is timeless. Although it's built for hard work, the classic simplicity of its lines is in perennial good taste.

TAXI-PROVEN

Only the Checker Aerobus offers these TAXI-PROVEN facts:

PROVEN . . . in billions of miles of taxicab operation.

PROVEN . . . over the most varied terrain.

PROVEN . . . in all climates and at widely varying temperatures.

PROVEN . . . in verified maintenance records of hundreds of taxi companies.

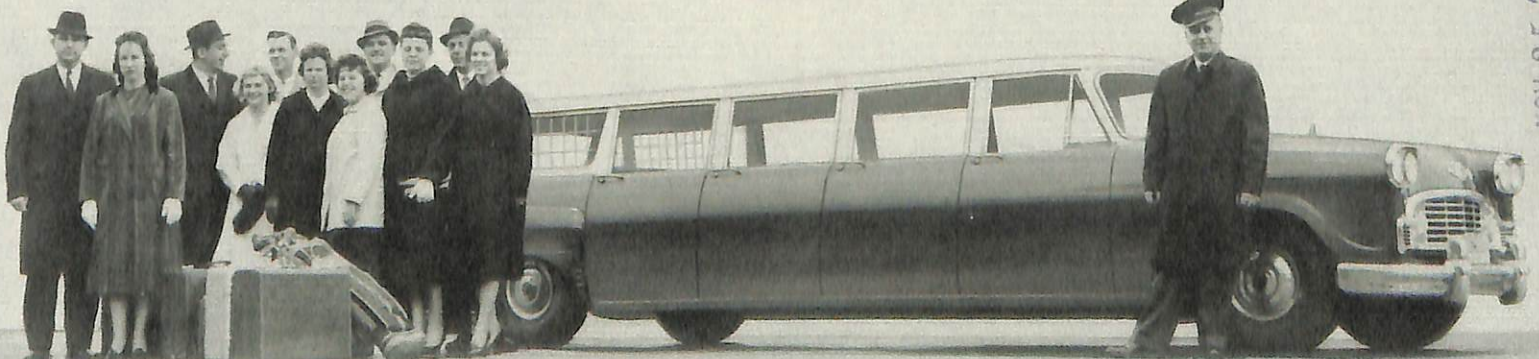
YOUR BEST BUY IN TRANSPORTATION IS THE TAXI-PROVEN CHECKER AEROBUS



For additional information write:

CHECKER MOTORS CORPORATION

KALAMAZOO, MICHIGAN



NOV 25 1963